

# CO<sub>2</sub> Emissions

## Report Parameters

**From:** 18/11/2012 to 18/11/2012

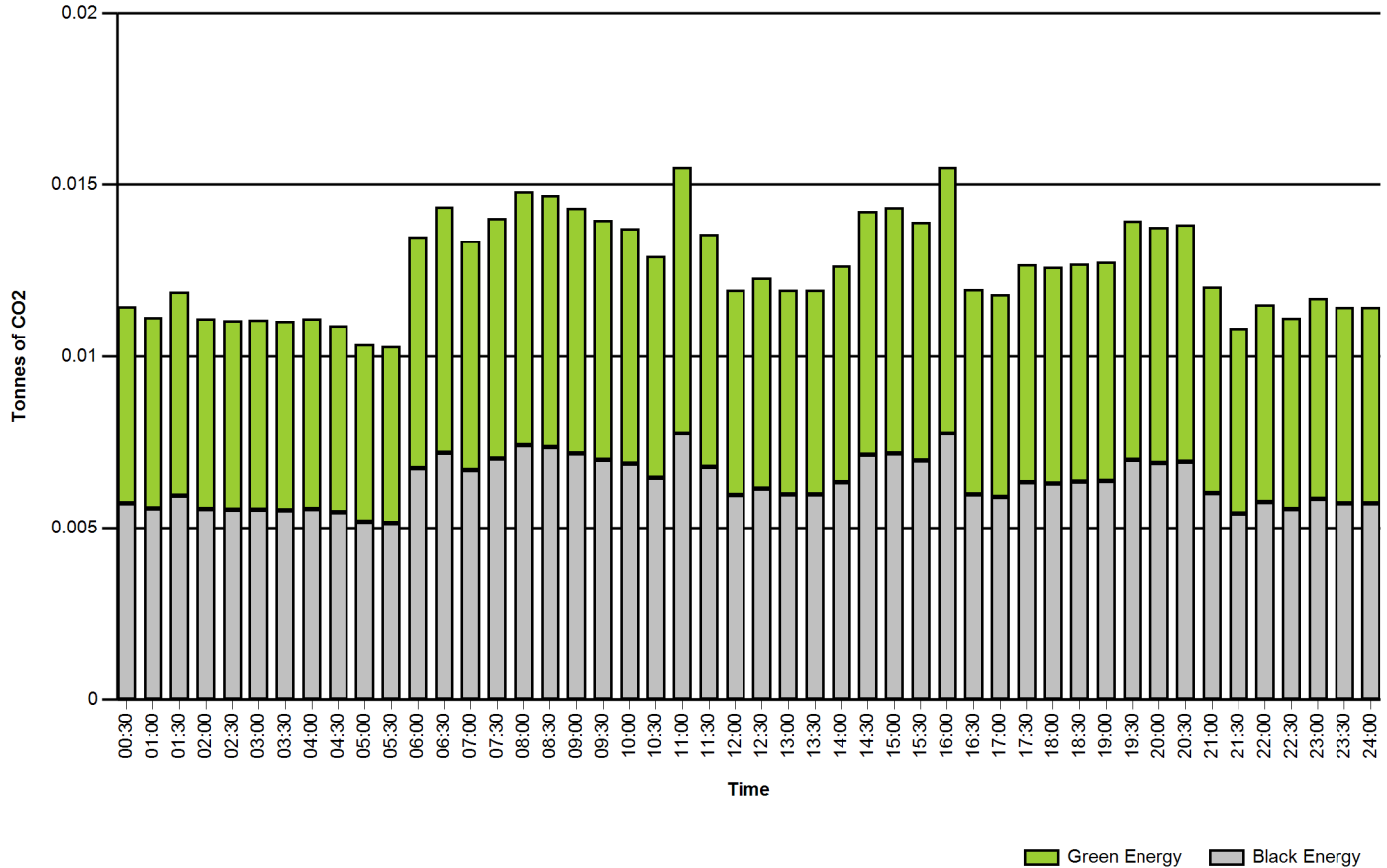
**Customer:** DET NSSP


**NMI(s):** NEEE001664

Elizabeth Dr Bonnyrigg


**Meter(s):** AMO001221,EDZ002272

**Time Zone:** AEST






**Total Emissions without Green Energy**  
**0.605 tonnes**  
of CO<sub>2</sub> Emissions produced



**Total Emissions with 50% Green Energy**  
**0.302 tonnes**  
of CO<sub>2</sub> Emissions produced



**Total Emissions saved by using 50% Green Energy**  
**0.302 tonnes**  
of CO<sub>2</sub> Emissions have not been released into the atmosphere.  
**Equivalent to 0.1 medium sized cars**

S = Substituted Data E = Estimated Data

Half Hourly Ending	Quality	Total Emissions without Green Energy in tonnes	Total Emissions with Green Energy in tonnes	Total Emissions Saved in tonnes
00:30		0.011	0.006	0.006
01:00		0.011	0.006	0.006
01:30		0.012	0.006	0.006
02:00		0.011	0.006	0.006
02:30		0.011	0.006	0.006
03:00		0.011	0.006	0.006
03:30		0.011	0.006	0.006

## Report Parameters

**From:** 18/11/2012 to 18/11/2012

**Customer:** DET NSSP

**NMI(s):** NEEE001664

Elizabeth Dr Bonnyrigg

**Meter(s):** AMO001221,EDZ002272

**Time Zone:** AEST

Half Hourly Ending	Quality	Total Emissions without Green Energy in tonnes	Total Emissions with Green Energy in tonnes	Total Emissions Saved in tonnes
04:00		0.011	0.006	0.006
04:30		0.011	0.005	0.005
05:00		0.010	0.005	0.005
05:30		0.010	0.005	0.005
06:00		0.013	0.007	0.007
06:30		0.014	0.007	0.007
07:00		0.013	0.007	0.007
07:30		0.014	0.007	0.007
08:00		0.015	0.007	0.007
08:30		0.015	0.007	0.007
09:00		0.014	0.007	0.007
09:30		0.014	0.007	0.007
10:00		0.014	0.007	0.007
10:30		0.013	0.006	0.006
11:00		0.016	0.008	0.008
11:30		0.014	0.007	0.007
12:00		0.012	0.006	0.006
12:30		0.012	0.006	0.006
13:00		0.012	0.006	0.006
13:30		0.012	0.006	0.006
14:00		0.013	0.006	0.006
14:30		0.014	0.007	0.007
15:00		0.014	0.007	0.007
15:30		0.014	0.007	0.007
16:00		0.016	0.008	0.008
16:30		0.012	0.006	0.006
17:00		0.012	0.006	0.006
17:30		0.013	0.006	0.006
18:00		0.013	0.006	0.006
18:30		0.013	0.006	0.006
19:00		0.013	0.006	0.006
19:30		0.014	0.007	0.007
20:00		0.014	0.007	0.007
20:30		0.014	0.007	0.007
21:00		0.012	0.006	0.006
21:30		0.011	0.005	0.005
22:00		0.012	0.006	0.006
22:30		0.011	0.006	0.006
23:00		0.012	0.006	0.006

**Disclaimer - Please Read**

Information used to generate this report is based on emission factors obtained from the Department of Climate Change and Energy Efficiency (NGA Factors) (<http://www.climatechange.gov.au/publications>). Any reports generated prior July 2011 use emission factors obtained from the Department of Climate Change and Energy Efficiency for that year.

**Important Notice:** This report and the information in it has been prepared by Testing and Certification Australia (ABN 67 505 337 385) subject to the terms and conditions: T&C WebGraphs Registered Users V2.0 at <http://www.tcaust.com>, current at the date of printing or online viewing of this report.

## Report Parameters

**From:** 18/11/2012 to 18/11/2012

**Customer:** DET NSSP

**NMI(s):** NEEE001664

Elizabeth Dr Bonnyrigg

**Meter(s):** AMO001221,EDZ002272

**Time Zone:** AEST

Half Hourly Ending	Quality	Total Emissions without Green Energy in tonnes	Total Emissions with Green Energy in tonnes	Total Emissions Saved in tonnes
23:30		0.011	0.006	0.006
24:00		0.011	0.006	0.006

### Disclaimer - Please Read

Information used to generate this report is based on emission factors obtained from the Department of Climate Change and Energy Efficiency (NGA Factors) (<http://www.climatechange.gov.au/publications>). Any reports generated prior July 2011 use emission factors obtained from the Department of Climate Change and Energy Efficiency for that year.

**Important Notice:** This report and the information in it has been prepared by Testing and Certification Australia (ABN 67 505 337 385) subject to the terms and conditions: T&C WebGraphs Registered Users V2.0 at <http://www.tcaust.com>, current at the date of printing or online viewing of this report.